



JOHN PSARRAS
S&P CHARTERING



IN PIRAEUS SINCE 1981

Ph:+30 210 4123696 4133931 4115482 Fx:+30 210 4170618
E'Mail: psarras@psarrasj.gr Website:www.psarrasj.gr
(Members of Hellenic Shipbrokers Association - 1984)

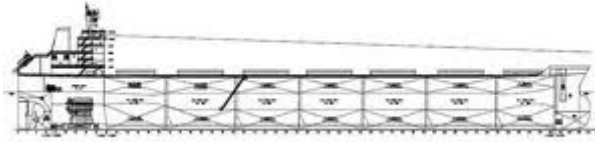
BI-MONTH REPORT

END FEBRUARY 2018

The scope of this report is to assist our clients and friends with a quick glance every about 15 days to get a feeling of the market by reading the more interesting sales in view of higher or lower prices of the main vessels types as well as the demolition prevailing prices.



Copyright : Owen Foley



BULK CARRIERS

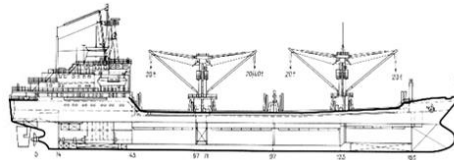
NAME	DWT	Y.O.B	P.O.B	PRICE
SILVER ROAD	185820	2002	JAPAN	15,7 MIL USD TO GREEKS
SOUTH TRADER	180200	2013	JAPAN	36,5 MIL USD TO UNDISCLOSED
EMERALD DONGJI EMERALD BAISHA	81480	2015	CHINA	EN BLOC 46 MIL USD TO UNDISCLOSED
IONIAN EAGLE	74085	2001	S.KOREA	9,4 MIL USD TO CHINESE
MONTE PELMO	72917	2000	S.KOREA	8 MIL USD TO INDONESIANS
VIKA	74461	1999	JAPAN	8 MIL USD TO MIDDLE EASTERNS
DA CHENG	57300	2010	CHINA	13,3 MIL USD TO CHINESE
AQUAMARIN	56969	2012	CHINA	12,1 MIL USD TO UNDISCLOSED VIA BANK
POLESTAR	53452	2006	JAPAN	9,3 MIL USD TO CHINESE
LA FRESNAIS LA LOIRAIS	39300	2018	CHINA	EN BLOC 36 MIL USD TO NORWEGIANS
FORMENTERA	35853	2011	CHINA	11,3 MIL USD TO GERMANS
SEA HARMONY	28409	2005	JAPAN	6,2 MIL USD TO UNDISCLOSED
TABERNACLE STAR II	23716	1995	JAPAN	3,1 MIL TO FAREASTERN



CONTAINER SHIPS

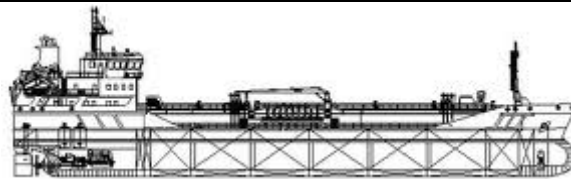
NAME	DWT	TEU	Y.O.B.	P.O.B	PRICE
SCHLIEMI RICKMERS	50497	4253	2010	CHINA	11,5 MIL USD TO GREEKS
AS CARELIA		2824	2006	S.KOREA	EN BLOC 138,5 MIL USD TO NORWEGIANS
AS CYPRIA		2824	2006	S.KOREA	
AS PALATIA		2602	2006	S.KOREA	
AS PATRIA		2602	2006	S.KOREA	
SEVILLIA		1794	2008	CHINA	
SICILIA		1794	2008	CHINA	
AS ROMINA		1496	2009	CHINA	

AS ROSALIA		1496	2009	CHINA	
AS RICCARDA		1496	2011	CHINA	
AS RAGNA		1496	2009	CHINA	
AS FELICIA		1296	2006	CHINA	
AS FABIANA		1296	2007	CHINA	
AS FEDERICA		1284	2007	CHINA	
AS FLORIANA		1284	2008	CHINA	
HS ROSSINI	46000	3421	2012	CHINA	11,2 MIL USD TO UK BASED
MCC KYOTO MCC SEOUL	22314	1713	2008	TAIWAN	19,8 MIL USD TO TO UK BASED
SINAR BROMO	15200	1060	2009	JAPAN	8,2 MIL USD TO UNDISCLOSED
OPDR TANGER	8168	698	2008	CHINA	3,7 MIL USD TO UNDISCLOSED
SAGITTA CENTAURUS	42600	3414 3426`	2010	GERMANY	EN BLOC 24,6 MIL USD TO UNDISCLOSED



GENERAL CARGO

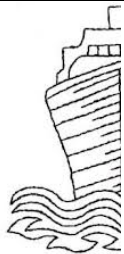
NAME	DWT	Y.O.B	P.O.B	PRICE
YEON AM	6175	1997	JAPAN	1,5 MIL USD TO EUROPEANS



TANKERS

NAME	DWT	HULL	Y.O.B	P.O.B.	PRICE
HS CARMEN	113033	DH	2003	S.KOREA	11,3 MIL USD TO GREEKS
MAERSK PRIVILEGE	105483	DH	2003	JAPAN	12,5 MIL USD TO HK BASED
KIRIBORA	50044	DH	2013	S.KOREA	27 MIL USD

BRITISH SERENITY BRITISH TRANQUILLITY BRITISH COURTESY SPEED PIONEER	47210	DH	2005	S.KOREA	TO DANISH EN BLOC 35,4 MIL USD TO S.KOREAN
HUASCAR	70514	DH	2000	JAPAN	6 MIL USD TO CHINESE
ROSA TOMASOS	35722	DH	1992	JAPAN	2,8 MIL USD TO UNDISCLO SED
MARTINA	37000	DH	2003	S.KOREA	8,75 MIL USD TO FAR EASTERN.
BREMEN TRADER	11137	DH	1998	ITALY	4 MIL USD TO MALTESE
	13185	DH	2006	S.KOREA	7,9 MIL USD TO INDONESIA NS



DEMOLITION



BANGLADESH

NAME	LDT	DWT	Y.O.B	P.O.B.	PRICE
POROS	38979	284170	2000	JAPAN	430 USD PER LDT
KAPITAN SERGIYEVSKIY	4215	5730	1981		440 USD PER LDT



NAME	LDT	DWT	Y.O.B	P.O.B.	PRICE
CHOKANG SUNRISE	21176	170475	1995	JAPAN	480 USD PER LDT



NAME	LDT	DWT	Y.O.B	P.O.B.	PRICE
LIMAR	9701	46162	1996	S.KOREA	435 USD PER LDT
PACIFIC PIONEER	16700	105237	1998	S.KOREA	460 USD PER LDT

Disclaimer

All information stated in this report has been collected from a variety of maritime sources and is presented in good faith and without any guarantee from our part .

J. PSARRAS S+P CHARTERING, shall not accept any responsibility for any errors and/or omissions arising from this report and cannot be held responsible for any action taken and/or losses occurred as a result of the details included in this report.

Recirculation of same is not permitted without the written agreement of the aforementioned company, which is the only entitled one to produce copies of same.